

Precise for J2EE

Performance Management for J2EE applications

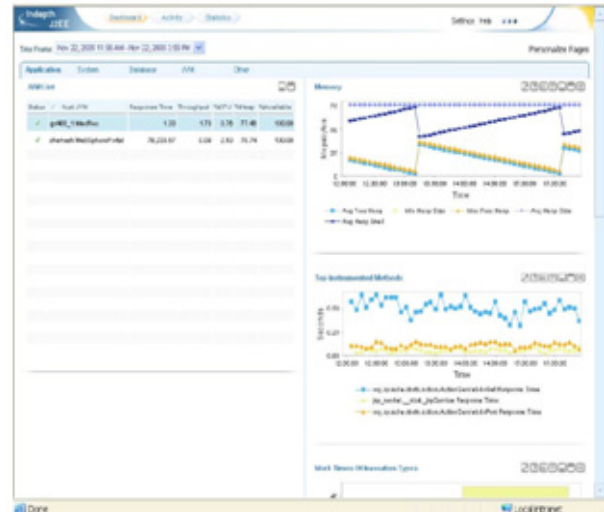
Ensure infrastructure performance

Today's internet-enabled applications demand peak performance, especially under burst loads when business consequences are greatest. Multi-tiered architectures centered on J2EE-compliant application servers provide the functionality needed to meet these demands. Precise for J2EE provides specialized features to ensure that your IT infrastructure withstands business demands and supports growth.

Precise for J2EE provides comprehensive performance management for server-side Java applications. It addresses the need for optimizing application performance during the development, testing, and production phases of the application life cycle. Precise for J2EE makes communicating J2EE performance problems easy, and allows performance data to be shared by all application stakeholders.

The critical role of the middle-tier Java application server has resulted in a need for specialized data collection and analysis capabilities to ensure scalability. Precise for J2EE provides a method for detecting and correcting performance degradation of the business-logic tier before your business is affected.

To help tie performance problems to business impact, Precise for J2EE provides an end-to-end breakdown of the end-user response time for complex distributed J2EE applications. Performance alerts and reports are then available for both the business and technical user to accelerate problem resolution efforts.



A Web-based GUI dashboard quickly and efficiently communicates performance problems.

Benefits

Precise for J2EE provides many benefits to both expert and junior Java personnel, including giving them the ability to:

- Understand the performance of Web Services.
- Understand response-time contributions from JSPs, Servlets, JDBC, EJBs, JMS, XML, Web Services, and more.
- Review current and historical performance data.
- Correlate activity across Web servers, multiple JVMs, and databases.
- Analyze complex performance data automatically and provide expert advice to resolve or prevent problems from occurring.
- Use Adaptive Instrumentation to automatically discover and instrument application components to maximize visibility and minimize overhead.
- Run in QA under load or in production environments.
- Visually manage the health of your JVM by monitoring memory, CPU, threads, and more.
- Collect and correlate JMX metrics.
- Quickly isolate SQL statements generated by

Precise for J2EE

Performance Management for J2EE applications

your J2EE application that are causing problems, then continue the performance analysis in the database using Precise for Oracle, DB2 UDB, SQL Server, or Sybase.

Instantly detect performance bottlenecks

Precise for J2EE couples in-depth knowledge of your J2EE application with expert system technology to instantly isolate the root cause of performance problems and recommend actionable advice on how to correct them. Companies with limited practical expertise in deploying J2EE applications into production can immediately benefit from this problem-solving intelligence. With a single mouse click, staff in QA and production environments are able to quickly identify and resolve performance problems—capabilities that were once the sole domain of engineering and development groups.

Identify and instrument hot spots automatically

The unique, patent-pending Adaptive Instrumentation tool ensures that all of an application's "hot spots" are identified and instrumented automatically—without costly application server restarts. Development, QA, and production teams no longer have to spend days or weeks trying to isolate the problem areas of their J2EE applications. Adaptive Instrumentation automatically maps the various application components, then adjusts and learns as changes are made to the application. This ensures maximum visibility with the lowest possible overhead.

Customize your data display

Communicating problems efficiently helps speed the time from problem detection to correction. Precise for J2EE provides a customizable operational

dashboard. Users can define the metrics they want to see (such as Response Time, Work Time, and JVM Status), and organize and display them on multiple user-defined tabs. The dashboard is role-based and can provide different views to each user.

Precise for J2EE: behind the scenes

Precise for J2EE is designed to run in production and scale to meet the variable needs of Java applications and deployments. Low-overhead, high-precision technology allows the agents to run in production to gain maximum application visibility with a minimum of overhead.

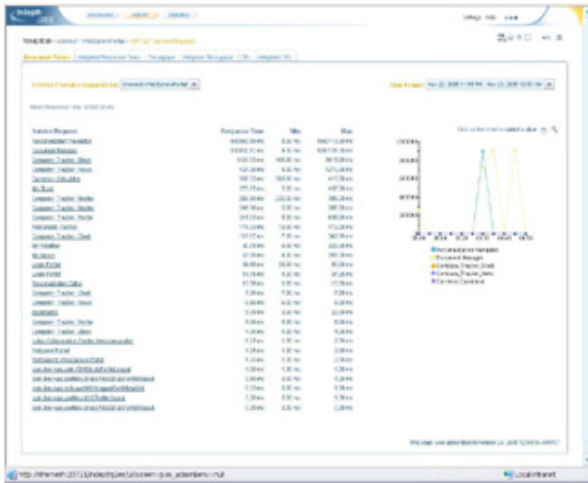
Precise for J2EE extracts performance metrics from the underlying operating system so that it can correlate CPU usage with Java application components and specific end-user transaction requests. Multiple levels of "method invocations" among Java components are correlated with user transactions to provide visibility into quantitative relationships among application components. It also leverages the unique vantage point of the middle tier to associate user requests with database activity, enabling it to isolate scalability bottlenecks between the middle tier and the database tier.

Precise for J2EE can also help identify class contention, report on exceptions thrown, and diagnose memory leaks.



Precise for J2EE

Performance Management for J2EE applications



The Portlet Performance screen provides extensive details on the performance of individual portlets running on your portal server.

Transaction Performance Management

J2EE application components are commonly cited as the source of performance bottlenecks. However, slowdowns on the J2EE tier are often a symptom of problems in other tiers such as the Web server, the network, or the database. Precise for J2EE enables IT organization to isolate slowdowns on the J2EE tier and correlate the problem in context with the users, web servers, or database calls made to accelerate problem resolution.

When integrated with Precise for Oracle, IBM DB2 Universal Database, or SQL Server, Precise for J2EE further empowers IT staff to follow application performance problems across the J2EE tier into the database.

System requirements

Consult <http://www.precise.com> for detailed application server and operating system version support information.

Application servers

- BEA WebLogic
- IBM WebSphere
- Oracle 9iAS, 10gAS
- JBoss
- Tomcat
- Macromedia JRun
- Sun iPlanet
- Sun JES
- SAP NetWeaver
- Resin
- JEUS

Operating systems

- Microsoft Windows
 - Sun Solaris
 - IBM AIX
 - HP-UX
 - Linux on Intel-based systems
-



Precise for J2EE

Performance Management for J2EE applications

About Precise Software Solutions

Commitment, Focus, Experience

For over 15 years Precise Software Solutions has helped our Global 2000 customers manage business performance in complex, heterogeneous environments, assuring availability and business continuity. Precise offers a complete solution – from discovery through ongoing management – that allows our customers to focus on their core business. We offer the broadest platform support, in terms of enterprise application, operating system, database, and development environment coverage. Precise is the solution of choice for IT as an organization-wide standard for application management.

Visit our Web site

www.precise.com

To speak with a Product Specialist in the U.S.

Call toll-free 1 (877) 845 1886. For specific country offices and contact numbers, please visit our Web site.

