

Precise™ for Sybase®

Performance Management for Sybase environments

Precise for Sybase gives database administrators (DBAs) and business leaders the application performance management they need by proactively monitoring, analyzing, and tuning Sybase instances.

Precise for Sybase not only identifies business application performance problems, it helps solve them. To ensure that mission critical applications perform at peak efficiency, Precise provides a complete view of application performance by capturing, measuring, and correlating performance metrics from all critical system components. Precise for Sybase helps to detect and correct the root cause of instance performance degradation before the end-user is affected, while maximizing the return on technology investment.

To help tie performance problems to business impact, Precise for Oracle provides a breakdown of the transaction response time in the SQL database. Performance alerts and reports are then available for both the business and technical user to accelerate problem resolution efforts.

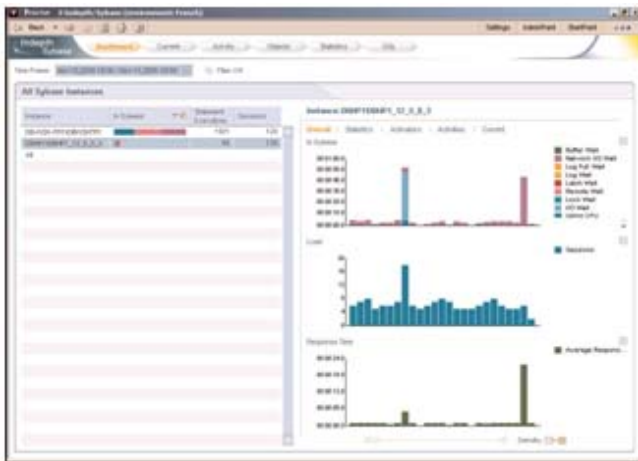


Figure 1 Precise for Sybase provides DBAs with current and historical information that can identify database performance bottlenecks.

Benefits

- Monitor performance continuously, comprehensively, and proactively.
- Monitor Sybase Replication server activity.
- Use the dashboard to easily view statistical and current instance activities.
- Drill down to individual SQL statements and the underlying objects affected by them.
- View deep performance analyses based on historical data.
- Identify the causes of locking and blocking issues in the instance.

Save time and effort with continuous monitoring

Precise for Sybase monitors your Sybase environment continuously, capturing performance data for your current, short-term, and long-term performance analysis.

An up-to-the second snapshot of database activity helps Precise for Sybase users investigate and resolve bottlenecks, such as a locked session or a runaway process. For problems that occurred further in the past, Precise for Sybase supports the ability to review the performance data of a recent activity to answer questions such as, “What caused a slowdown in the system yesterday between 10:00 p.m. and 11:00 p.m.?”

Identify performance shortfall cause and effect

Once Precise for Sybase detects a performance problem, a user can drill down to pinpoint the problem’s cause. Typical causes are a poorly designed SQL statement, program, or database object, or a bottleneck due to a resource shortage in the operating system or instance. Precise displays detailed performance information in easy-to-

Precise™ for Sybase®

Performance Management for Sybase environments

understand graphics, so you can quickly identify your most serious problem areas.

Instance level

Using Precise, you can see which instance-level resources are causing performance problems. For example, you can drill down to see whether the root cause is excessive CPU or I/O resources, flawed database design (which creates locking problems), or internal Sybase problems (which cause waits in resources such as latches and data buffers).

Resource consumer level

To determine which resource consumers are responsible for your performance problem, Precise for Sybase drills down another level to identify which entities (logins, programs, client machines, and so on) were consuming resources during a specified unit of time.

SQL statement level

Precise probes even further to identify SQL statements and batches that are causing problems. This includes SQL statements that consume the largest amounts of resources, long-running SQL statements, and short but frequently executed SQL statements.

It also enables DBAs to correlate from a batch to all the SQL statements originated from it. Precise for Sybase collapses SQL statements with different bind variable values into one statement with one aggregated resource consumption.

For each SQL statement or batch, Precise for Sybase shows the resources that are causing waits. For

example, you can determine whether an SQL statement is CPU- or I/O-bound, or whether it is affected by the excessive resource use of another SQL statement.

Analyze problems

Once it has identified a problem, Precise for Sybase can use its robust analysis utilities to focus on SQL statements and/or database objects that are causing problems.

SQL statement analysis

Precise enables DBAs to analyze SQL statements and database objects to determine whether performance problems are caused by poorly written SQL statements or by inefficient object design. In addition, it presents the Sybase access path in a tree format with detailed steps, and displays the statistics needed to understand each step.

The program allows DBAs to track changes to execution plans over the course of time. For example, it indicates whether a new execution plan is consuming more resources due to a deleted index.

To solve common SQL shortfalls, DBAs can store SQL statements in a logical cabinet and folder hierarchy. They can populate this hierarchy with statements appearing in the activity and SQL workspaces, or with manually written statements. They can then examine stored statements to locate ones that meet your current requirements. Users can also modify a statement and assess the impact of their modifications to the statement's access plan.

Precise™ for Sybase®

Performance Management for Sybase environments

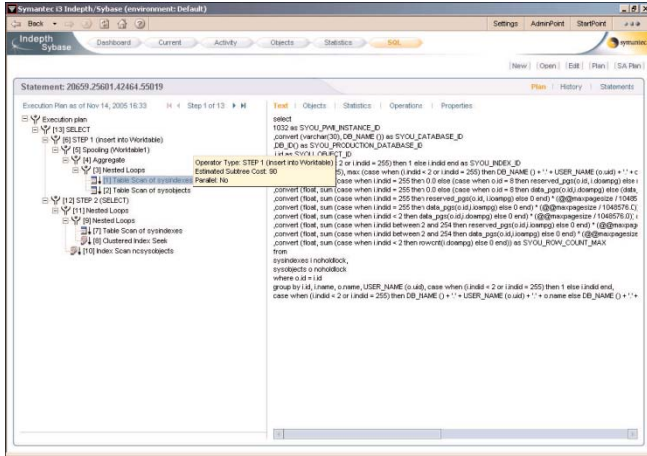


Figure 2 Precise for Sybase displays each SQL statement execution plan with its text and underlying objects.

Instance statistics for analysis

Precise for Sybase continuously collects instance and database statistics and saves them in the Performance Warehouse. This enables DBAs to correlate application performance metrics with instance performance metrics (such as Sybase engine utilization), then analyze them to help solve problems.

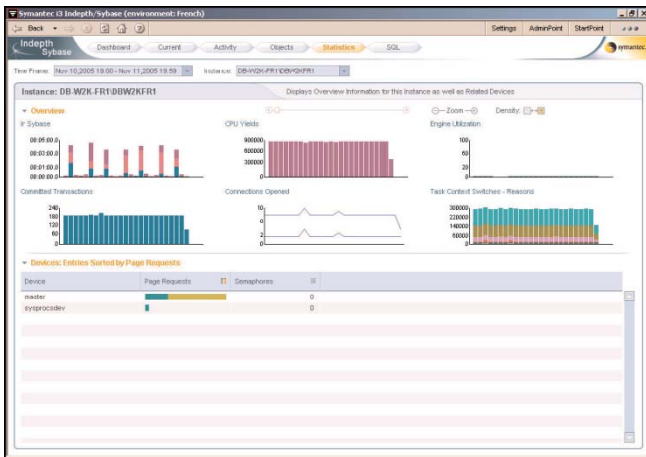


Figure 3 Precise for Sybase lets you examine the key performance statistics of each Sybase instance.

Improve performance

Inefficient SQL statements and poorly designed database structures are the leading causes of performance problems in Sybase environments. Precise features built-in utilities to tune these components and improve performance.

Step-by-step performance management

The easy-to-use, comprehensive approach of Precise for Sybase guides you through performance management from start to finish—from proactive monitoring and problem detection to problem identification, analysis, resolution, and verification.

System requirements

Consult <http://www.precise.com> for detailed application server and operating system version support information.

Database

Sybase ASE versions 11.9.2, 12.0.0, 12.5.x, 15.x

Replication Server

Sybase Replication Server versions 12.6 and 15.x

Server operating systems

Microsoft Windows 2000 Server, Windows Server 2003, or XP, Sun Solaris (32-bit or 64-bit); Solaris 10, HP-UX 11 or 11i (32-bit or 64-bit), or HP-UX 11i v2, IBM AIX 4.3, 5.1L, 5.2L, or 5.3 (32-bit or 64-bit), Red Hat 7.2, 8, or 9; AS2.1 or 3; or Itanium 64 Linux

Precise™ for Sybase®

Performance Management for Sybase environments

About Precise Software Solutions

Commitment, Focus, Experience

For over 15 years Precise Software Solutions has helped our Global 2000 customers manage business performance in complex, heterogeneous environments, assuring availability and business continuity. Precise offers a complete solution – from discovery through ongoing management – that allows our customers to focus on their core business. We offer the broadest platform support, in terms of enterprise application, operating system, database, and development environment coverage. Precise is the solution of choice for IT as an organization-wide standard for application management.

Visit our Web site

www.precise.com

To speak with a Product Specialist in the U.S.

Call toll-free 1 (877) 845 1886. For specific country offices and contact numbers, please visit our Web site.